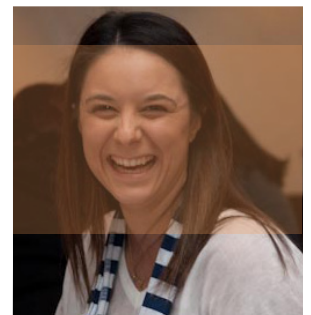
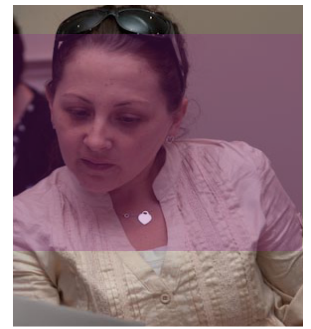
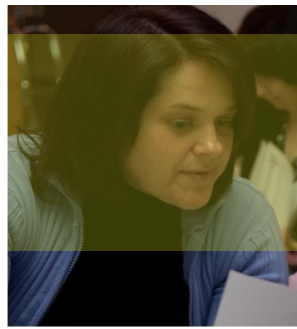


Give yourself the **edge** with the support and guidance of a **mentor**



Whether you need advice or guidance, a mentor can encourage and motivate you to be your best!

- Set professional goals and strive to meet them;
- Work smarter not harder;
- Receive individualised support during times of change and transition; and
- Enhance your confidence in dealing with challenges and facing issues.

Children's Services Central Mentoring Program will match you to a mentor based on your personal profile. Support is available for:

- Directors, Co-ordinators, and/or Managers in rural and metro regions.
- Management Committees.
- New owners.

Our Mentoring Program is designed to benefit Protégés with potential outcomes such as:

- Developing new skills;
- Identifying areas for professional growth;
- Strategic career planning;
- Gaining or increasing knowledge of Early Childhood Education and Care reform – individualised support to navigate the National Quality Framework;
- Finding new ways to approach old problems;
- Increasing confidence, and
- Building capacity.

If you wish to learn more about this valuable program, please call Children's Services Central on

1800 157 818

**COMMUNITY
CHILD CARE
CO-OPERATIVE**
LTD.(NSW)



network
of Community Activities
66 Albion St. Surry Hills 2010
phone: (02) 9212 3244
fax: (02) 9281 9645
network@netcoosh.org.au



Children's Services Central is the Professional Support Coordinator in New South Wales and is an initiative funded by the Australian Government under the Inclusion and Professional Support Program. Children's Services Central is managed by a consortium of key organisations that resource and support the sectors of children's services in New South Wales. Feedback and enquiries should initially be directed to the Professional Support Coordinator in your region. Further information can be sought by contacting the Department of Education, Employment and Workplace Relations.