

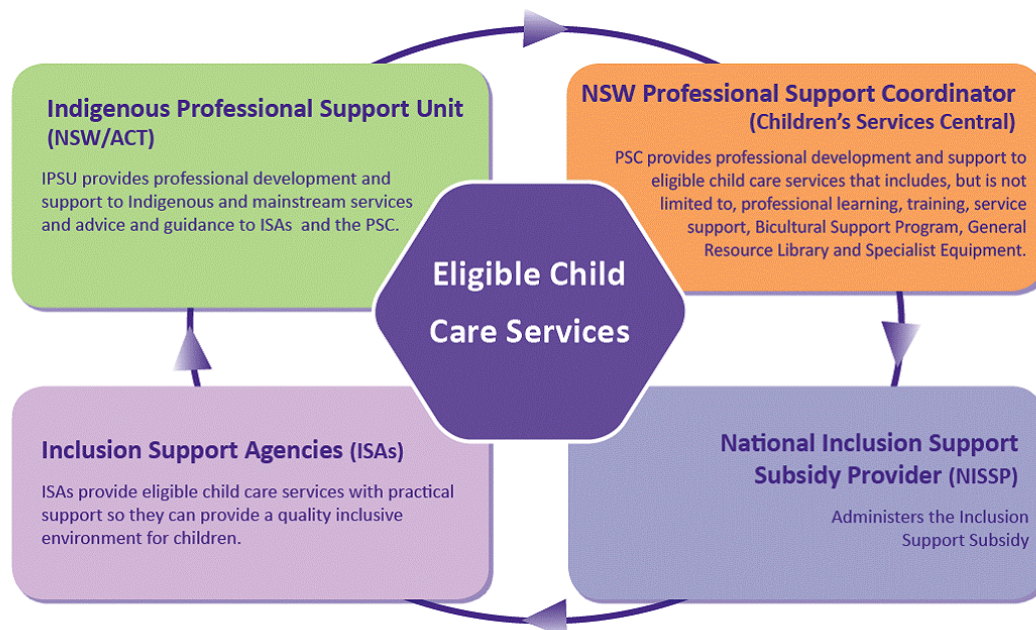
# INCLUSION AND PROFESSIONAL SUPPORT PROGRAM

The **Inclusion and Professional Support Program (IPSP)** is funded by the Australian Government. It is an integrated approach to supporting and enhancing the inclusion and professional development needs of child care services. Inclusion Support Agencies (ISA), National Inclusion Support Subsidy Provider (NISSP), the Indigenous Professional Support Unit (IPSU NSW/ ACT) and the Professional Support Coordinator (PSC) are components of the IPSP.

There are 18 ISA regions in NSW. These are managed by a number of organisations - Armidale and District Family Day Care, Ballina District Community Services Association, Illawarra Children's Services, KU Children's Services, Lady Gowrie Child Centre, Penrith City Council, St Joseph's Family Services, and SDN Child and Family Services.

KU Children's Services is the National Inclusion Support Subsidy Provider (NISSP). KU administers the Inclusion Support Subsidy, paid to child care services to support the inclusion of a child or children with ongoing high support needs.

The IPSU (NSW/ACT) is managed by Lady Gowrie Child Centre. The PSC (NSW) is Children's Services Central and is managed by a consortium of 6 key organisations with Community Child Care Cooperative (NSW) as the lead agency.



*\*Eligible services are child care services in New South Wales that are Australian Government approved childcare services including: community-based and private long day care, outside school hours care (including vacation care), family day care, occasional care, in-home care, flexible/multifunctional services, non-mainstream outside school hours care, non-formula funded occasional care, and mobile child care services.*

**ISAs, the IPSU, the NISSP and the PSC work collaboratively to support and resource eligible services. This support is enhanced through the sharing of non-confidential information. Please let the ISA, IPSU, NISSP or PSC know if you would prefer this information is not shared between agencies.**